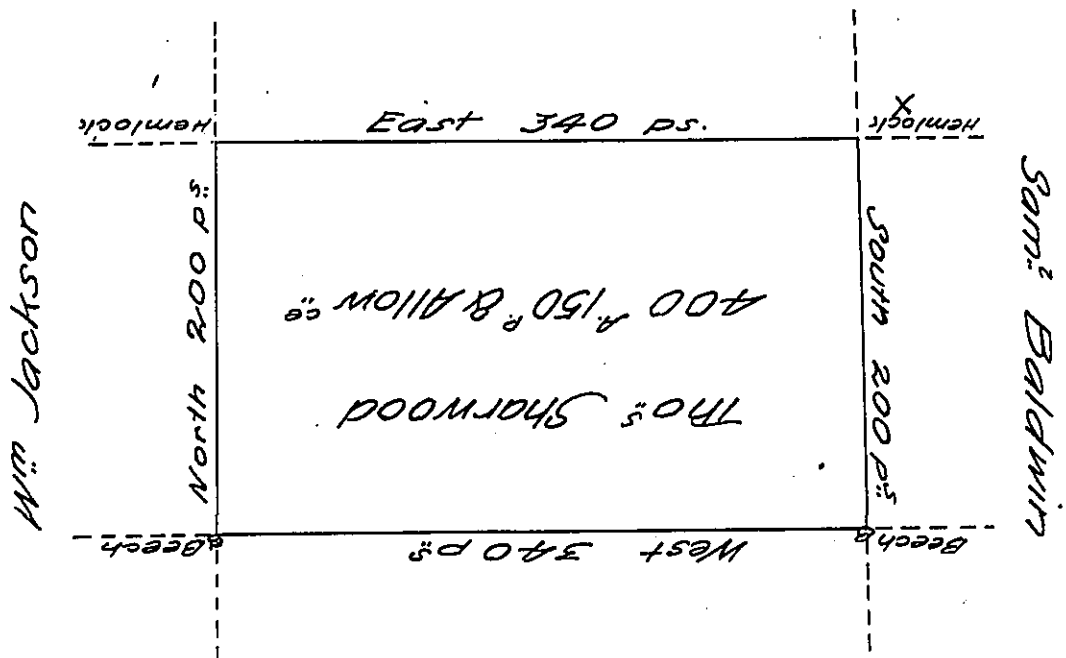


John Sharwood



Wm Sharwood

A Draught of a Tract of Land situate on the Waters of little Sugar Creek in the County of Luzerne, Containing Four hundred Acres: 150 perches & Allow^{ee} of Six P. Ct. for Roads &c. Surveyed July 22nd 1793 on a Warrant to Thomas Sharwood dated the 13th Aug^o 1792

Jo J. Wallis D.S.

To Daniel Brodhead Esq^r
Surveyor General

IN TESTIMONY that the above is a copy of the original remaining on file in the Department of Internal Affairs of Pennsylvania, made conformably to an Act of Assembly approved the 16th day of February, 1833, I have hereunto set my Hand and caused the Seal of said Department to be affixed at Harrisburg, this thirtieth day of November 1906

Isaac R Brown
Secretary of Internal Affairs.